

INDEX OF SHEETS

TITLE SHEET	1
TYPICAL SECTIONS (1 Sheet)	2
SUMMARY (1 Sheet)	2-A
PLAN-PROFILE & 8 SHEETS	3-4
REFERENCE POINTS (on Plan Sheet #3)	
SPECIAL SHEETS	
LIGHTING	
SIGNALS	
SIGNING	
CULVERT SECTIONS	
BRIDGE PLANS	5-11
STANDARDS	7
CROSS SECTIONS	1-7

DESIGN DESIGNATION

A.D.T. (1961) = 1800
 A.D.T. (1981) = 3600
 D.H.V. (1981) = 360
 D=50 %
 T=12 %
 V=50 m.p.h. (Widen'g & Resurf.)
 60 m.p.h. (Relocation)

MISSOURI STATE HIGHWAY COMMISSION PLAN AND PROFILE OF PROPOSED STATE ROAD

FEDERAL AID PROJECT

PLATTE COUNTY

LIMITED ACCESS HIGHWAY

FINAL PLANS

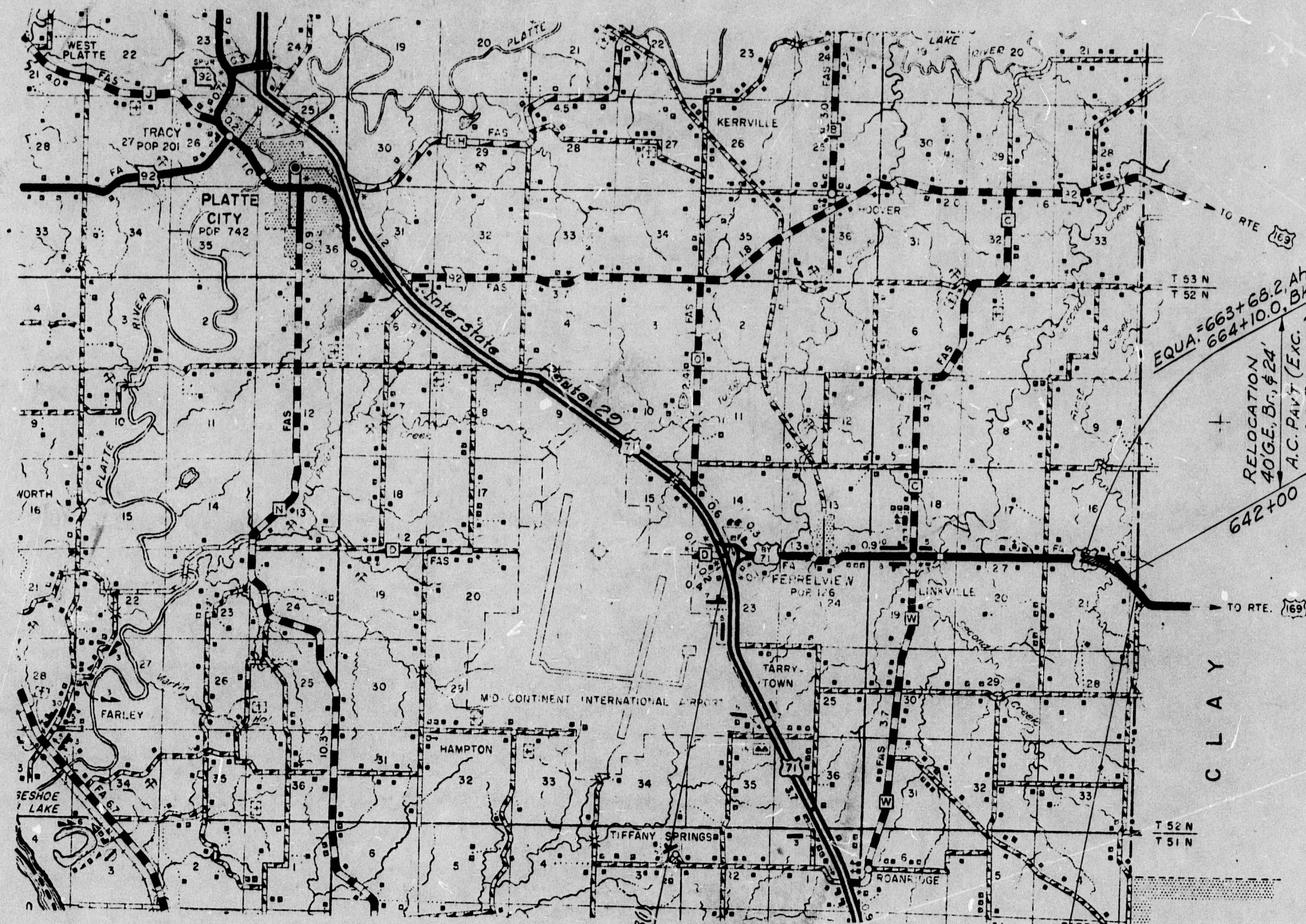
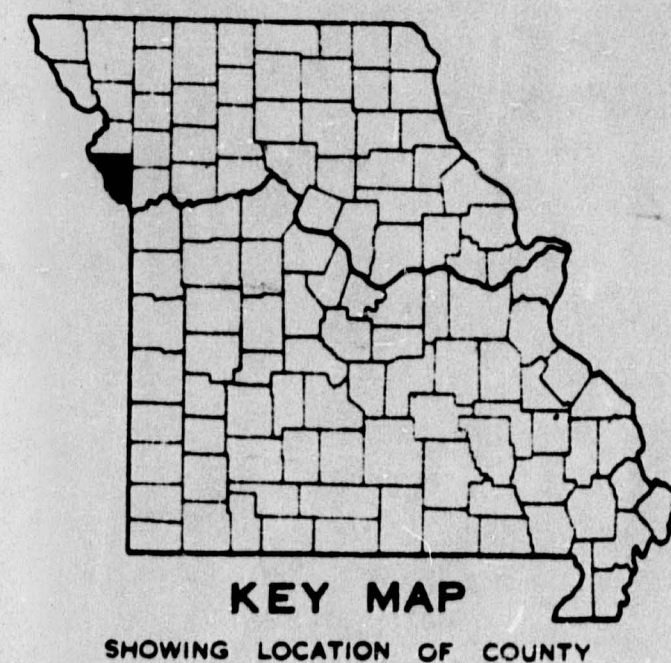
COUNTY
PLATTE
STATE ROUTE NO.
71 BYPASS
PROJECT NO.
SEC. 83(1)

FOR FINAL PLANS

This shall be a limited access highway between Sta. 641+00 and Sta. 665+00. Except at locations and as otherwise specifically shown on these plans, no abutter's rights in, or of direct access to, from, or across the highway or its right of way shall attach or belong to any property abutting on said section of highway, or to any person merely because of ownership of such abutting property. There shall be the usual right of access over any location either (1) shown on these plans as a property entrance (P.E.), field entrance (F.E.), or private underpass, or (2) where and when any such entrance, underpass, or an open public highway is being maintained by the governmental agency having authority therefor. Wherever an adjacent outer-roadway is so shown or maintained, there shall be the usual right of direct access between the abutting property and such outer-roadway to which access is not specifically prohibited by the special symbol denoting "No Right of Access" as shown on the plans, and along it to and from the nearest lane of the thruway or a public highway.

LEGEND

- +—+— Beginning and Ending of Limited Access
- + Limited Access
- ||| No Right of Access or Crossing of Lines bearing this symbol will be permitted under any circumstances.



CLAY

CONVENTIONAL SYMBOLS

STATE LINE	---
COUNTY LINE	---
CITY LIMITS	
TOWNSHIP OR RANGE LINE	---
OTHER LAND SURVEY LINES	---
FENCE LINE	---
GUARD RAIL	---
PROPERTY LINE	---
RIGHT OF WAY LINE	---
RIGHT OF WAY MARKER	---
RAILROAD	---
SURVEY CENTER-LINE	---
CULVERT	---
OVERHEAD TELEPHONE NEW	---T---
OVERHEAD TELEPHONE EXIST.	---T---

EXISTING BUILDINGS & STRUCTURES	---
GROUND LINE	---
GRADE LINE	---
OVERHEAD POWER-EXIST.	---
OVERHEAD POWER-NEW	---
UNDERGROUND GAS-NEW	---
UNDERGROUND WATER-EXIST.	---

TITLE SHEET LEGEND

INTERCHANGE	---
GRADE SEPARATION	---
CONSTRUCTION IDENTIFICATION SIGNS	---

236+40 END R.T. 118.83(1)
 = STA. 236+40
 RTE. 11, SEC. 39

RTE. 71 BYPASS, SEC. 83(1)
 24' ASPH. CONC. WIDEN. & RESURF.
 Length 4.889 miles

627+25 BEGIN
 RTE. 71 B.P. SEC. 83(1)
 STA. 627+25, RTE. 1
 SEC. 39

EQUATIONS:

664+10.0, BK. = 663+68.2, Ah'd
 675+88.8, BK. = 47+33.6, Ah'd

SUBMITTED BY DATE

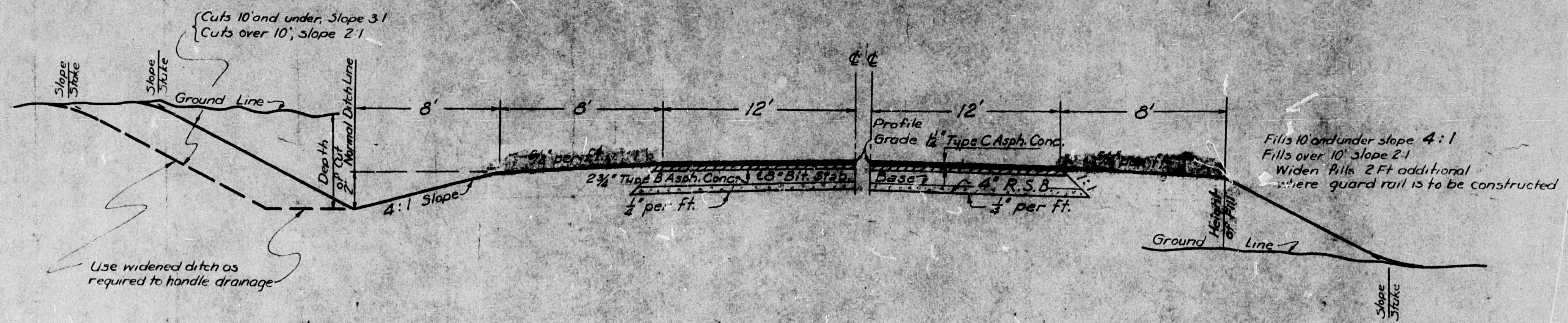
CHIEF ENGINEER
 MISSOURI STATE HIGHWAY COMMISSION
 DEPARTMENT OF COMMERCE
 BUREAU OF PUBLIC ROADS

APPROVED:

DIVISION ENGINEER DATE

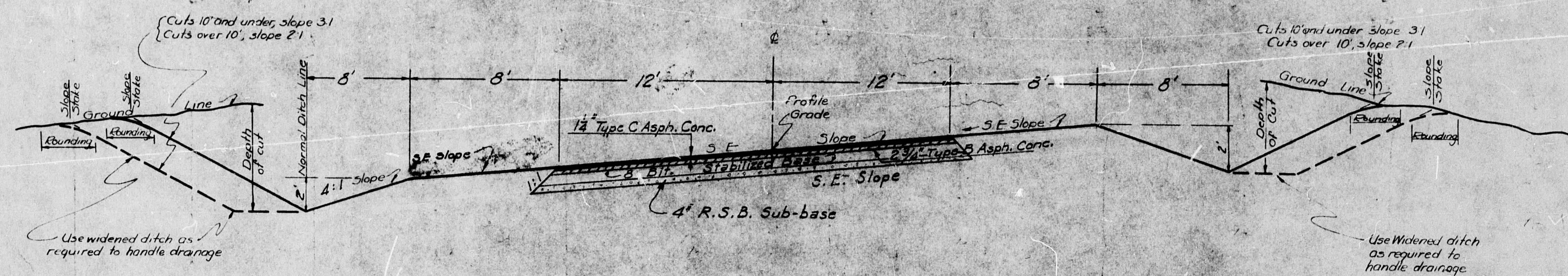


373



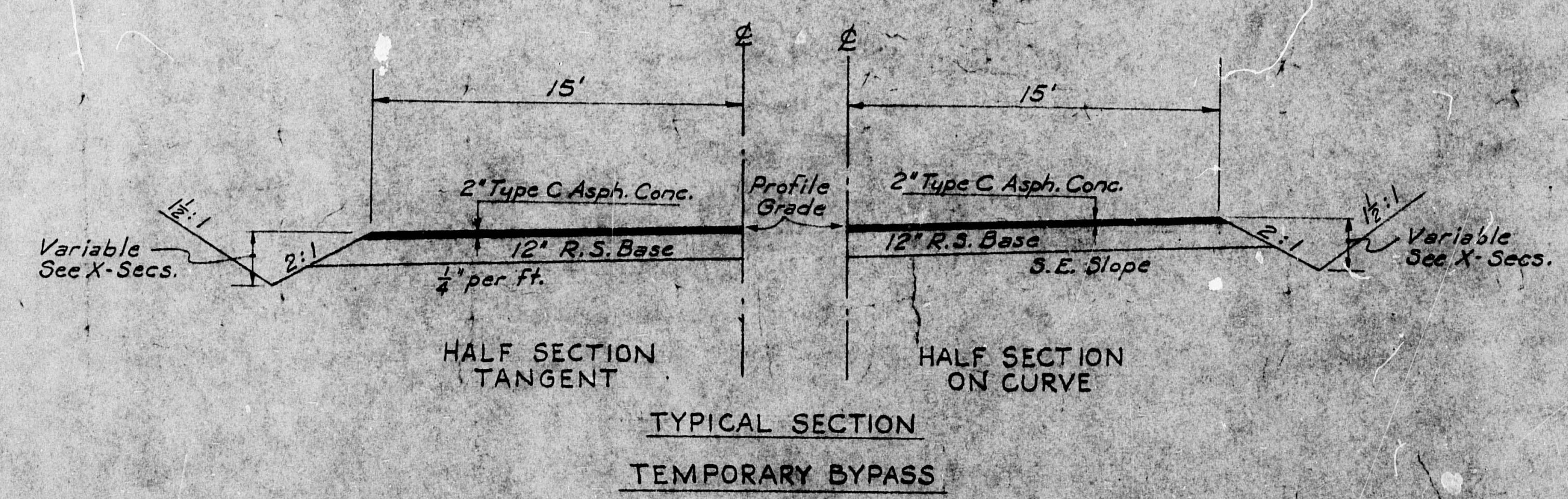
Note:
Between Sta. 642 & Sta. 645+, the asph. conc. pavement is to be laid over the existing concrete. Base courses shall be used only as required for Pav't Widening.

SECTION ON TANGENT



CUT SECTION ON SUPERELEVATED CURVE (ALL CURVES OVER 30 MINUTES)

NOTE: Fill sections on superelevated curve to be identical to this section from shoulder to shoulder. Beyond shoulders use same as shown for "Section on Tangent."



GENERAL NOTES:
For details of super-elevation & widening of horizontal curves, undergrading, rounding, all pav't appurtenances, drainage items, etc., see other dwgs & Std. Dwg. 21.40
In transitioning from one cut or fill slope to another, use a 25' transition beginning at a point 25' back along that which would normally be the flatter slope and ending the transition at the actual point where the steeper slope is required. If the actual limits requiring a steeper slope is less than 25' in length, do not change to the steeper slope.
All information shown on these Typical Sections is for the purpose of indicating general design and construction details. Actual construction of roadway widths, slopes, depths and type of ditches, undergraded cuts, and other features, shall conform to the details shown on Cross Sections and Plan-Profile sheets or as directed by the Engineer.

MISSOURI STATE HIGHWAY COMMISSION
PRIMARY SYSTEM
TYPICAL SECTIONS
FOR
40' GRADED EARTH
AND
24 FT. ASPH. CONC. PAV'T

(DESIGN SPEED 60 M.P.H.)
ROUTE 71 BYPASS COUNTY: PLATTE
PROJECT SEC. 83(1)
APPROVED *J.C. Lewis* ENGR. SURVEYS & PLANS
APPROVED *J.J. Corbett* CHIEF ENGINEER

374

DATE	
BY	
FINAL SURVEY	
NOTE BOOK	
NO.	

DATE	
BY	
FINAL SURVEY	
NOTE BOOK	
NO.	

TYPE GRADED EARTH, BRIDGES, 24" A.C. PAV'T. ON PART & 24" A.C. WIDEN/RESURF. ON PART

SUMMARY OF QUANTITIES

FED. ROAD DIST. No.	STATE	PROJECT	FISCAL YEAR	SHEET No.	TOTAL SHEETS
5	MO.			2A	
DIST. No.	COUNTY	ROUTE	SEC. No.		
4	PLATTE	71-BP 83(1)			

EXCAVATION

STATION	CL. EXC.	CH. CH. A	OBLITERATE OLD ROAD TEMP. B.P.	COMP. EMB. COMP. EMB. TEMP. B.P.	COMP. CUT	M.G. CL. 1	SHAPING SHOULDER	REMARKS
627125								
642100								
664100	17976	6210	531	2171	18251	1464	3507	Ch. Ch. - See SA No. 3 Comp. Cut - See Sh. No. 5
663140								
256140								
192125								
193175		928						
220140								
225100								
		1033						
UN-TOTALS	18904	7243	531	2171	18251	1464	3507	See Sheet No. 6
CH. CH. A	7243							
CH. CH. A	531							
CH. CH. A	2171							
CH. CH. A								
ENTRS.								
TOTALS	28849							

MISCELLANEOUS ITEMS

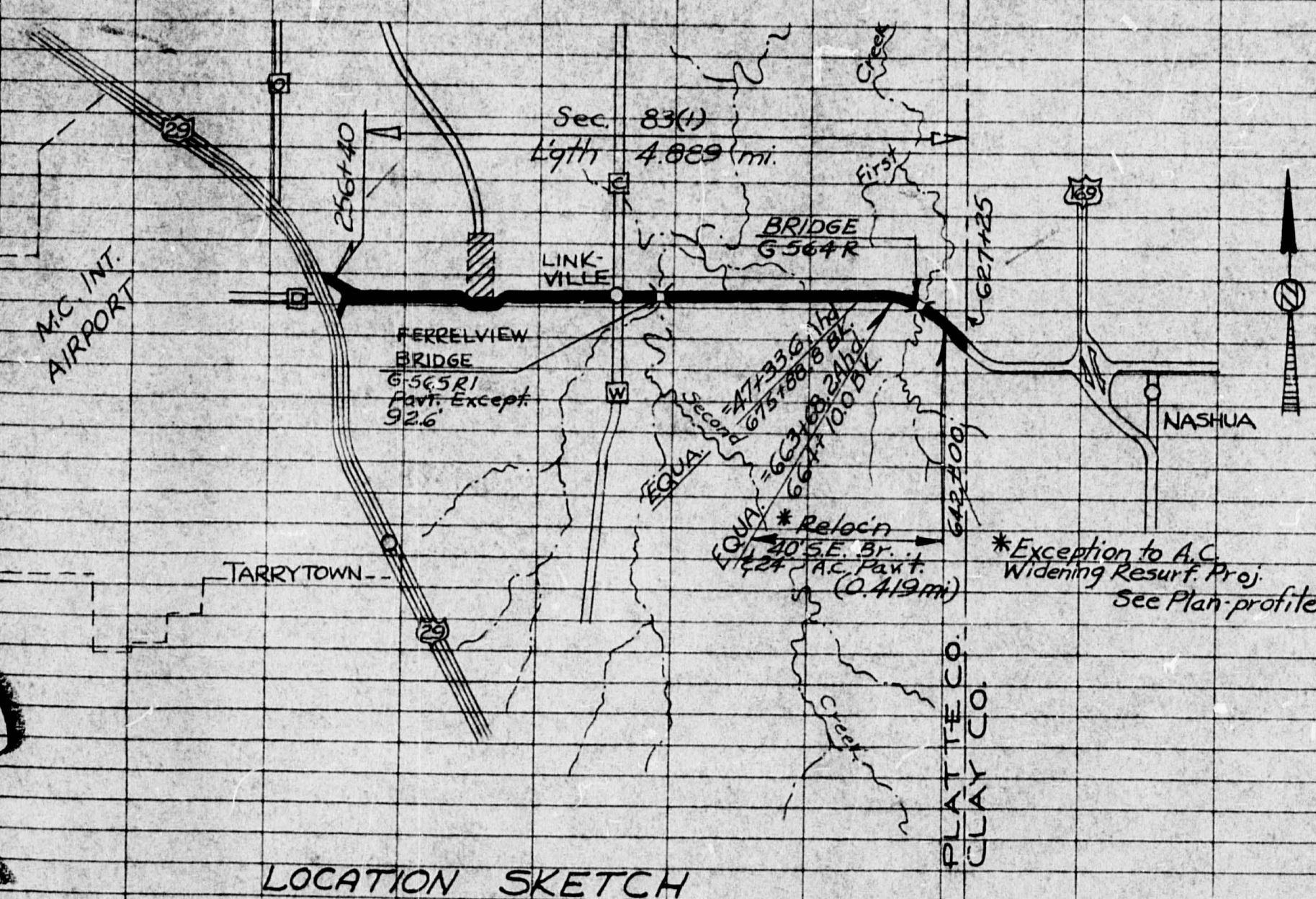
SHEET NO.	R/W MARKERS (EACH)	TYPE 2 MULCH (SQ. FT.)	SEEDING (SQ. FT.)
3	24	191270	191270
4	3		
TOTALS	27	191270	191270
USE	27	4.4 ACRES	4.4 ACRES

RIGID PAVEMENT REMOVAL

STATION TO	STATION	LENGTH	WIDTH	SQ. YDS.	REMARKS
644126	664110	1841.0'	18.0'	3682	Surface Measured
TOTAL				3682	

GROUTED LIGHT STONE REVETMENT

STATION	LOCATION	WIDTH	LENGTH	SQ. YDS.	REMARKS
645110	Rt. Slope	4.4'	56'	27.4	Field Notes - See Sheet No. 3 USDA Ch. B Cons. in 2120 of Broken Conc.
TOTAL				27.4	



LOCATION SKETCH

BOX CULVERTS

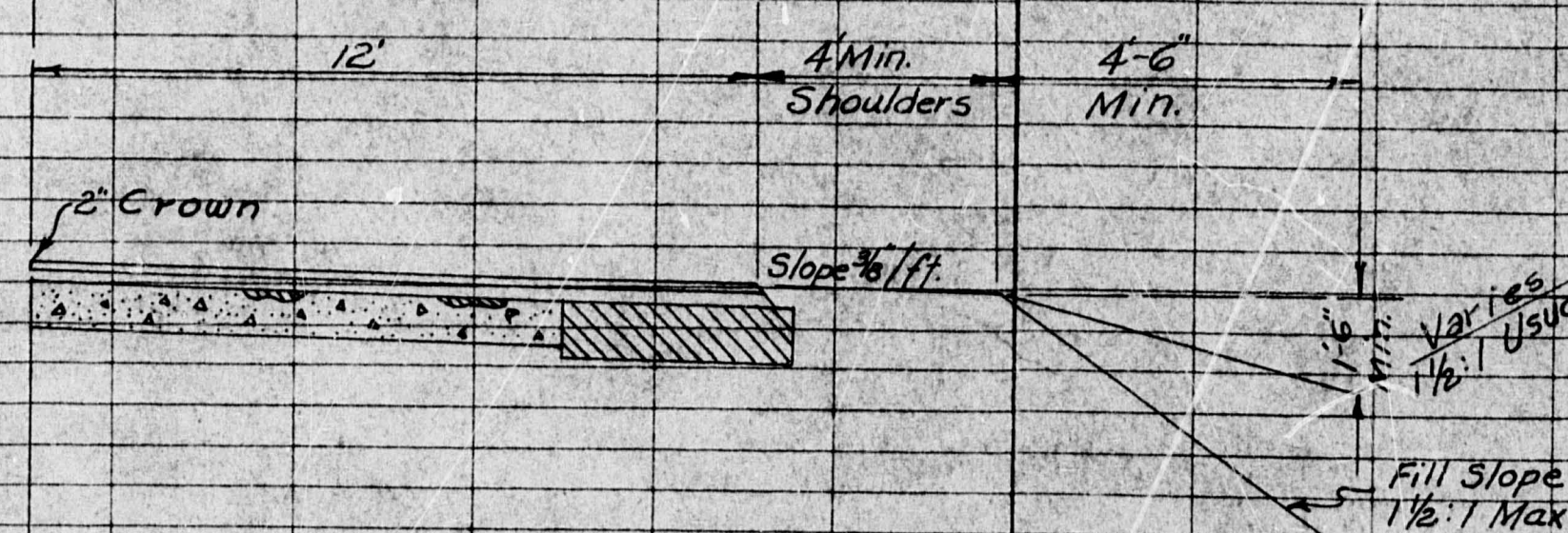
STATION	LOCATION	JTD.	SIZE	SKEN	1/8TH CL. B CONC.	REIN. P.	CL. 3 EXC.	MIN. SLOPE	REMARKS
81176	E	53.30	24" RCP	6' LT.	1.8	2.5	1	2.1	Ext'n. LT.
114166	E	53.30	24" RCP	4' LT.	1.4	2.0	1	2.1	Ext'n. LT.
237480	E	53.30	24" RCP	8' RT.	4.4	6.0	2	2.1	Ext'n. LT. & RT.
TOTALS					7.6	10.50	4		

CROSSROAD PIPE CULVERTS

STATION	15' CMP	24" RCP	HDWLL CONC.	STEEL	EXC.	SKEN	REMARKS
636120	10	53.40 R	1.1	100	0	2.5	Ext'n. RT. to 416 Box Culvert
636120			0.4	20	1		2.1.6 Box 24" RCP
663150	42				7		Rt. LT. TEMP. BY-PASS
TOTALS	42	10			1.5	120	8

ENTRANCES (CMP)

STATION	LOCATION	12"	15"	18"	24"	30"	36"	M.G. CL. 1	REMARKS
662125	FE. LT.							0.4	Dbl. Entry - Crowned
663155	PE. RT.	2.8						0.3	
44145	FE. LT.			2.8					
77180	PE. LT.		2.8						
85175	PE. RT.	30							
87160	PE. RT.	2.8							
91110	PE. RT.					30			
91120	FE. LT.		2.6						
117130	PE. LT.			2.8					
136100	PE. RT.		2.8						
137110	PE. LT.			2.8					
142100	PE. RT.	2.8							
162135	PE. RT.	2.6							
162135	FE. LT.				20				
174160	PE. LT.		2.8						
201150	FE. LT.			2.6					
210100	FE. LT.	52							Dbl. Entry
235170	PE. LT.		2.6						
TOTALS		192	136	110	20	30	0.7		



TYPICAL HALF SECTION

FINAL PLANS GENERAL SUMMARY

ITEM NO.	DESCRIPTION	UNIT	TOTAL UNITS	NO. UNITS
21004	CLASS A EXCAVATION	CU. YD.	28849	
21204	COMPACTING EMBANKMENT	CU. YD.	19715	
21214	COMPACTING IN CUT	CU. YD.	3507	
21507	WATER	100 GA.	100	
21801A	MACHINE GRADING, CLASS 1	STATION	0.7	
23302	SHAPING SHOULDERS	MILE	4.47	
24200	REMOVAL OF (4) MISCELLANEOUS ITEMS	LUMP SUM	1	
24203	REMOVAL OF RIGID PAVEMENT	SQ. YD.	3682	
31015	TYPE 1 AGGREGATE FOR BASE	TON	2897	
31142	PROCESSING TYPE 1 AGGREGATE (4")	MILE	0.42	
31102	PROCESSING TYPE 1 AGGREGATE (12")	MILE	2.16	
33045	CRUSHED STONE (B) (SURFACE)	TON	285	
37015	JANING PRIMER	TON	37	
37207	PRIMER (RC-0)	GALLON	5250	
41205	MINERAL AGGREGATE (BASE)	TON	0	
41257	BITUMINOUS MATERIAL (BASE) (60-100 P.A.)	GALLON	0	
43025	TYPE B ASPHALTIC CONCRETE	TON	9591	
43025	TYPE B ASPH. CONC. (BASE WIDENING)	TON	10873	
43035	TYPE C ASPHALTIC CONCRETE	TON	5259	
43055	WEDGE COURSE	TON	4146	
50034	CLASS 3 EXCAVATION FOR STRUCTURES	CU. YD.	12	
53022	CLASS B CONCRETE (MISCELLANEOUS)	CU. YD.	91	
54000	REINFORCING STEEL	POUND	1170	
60112	12" CORR. METAL PIPE CULVERT	LIN. FT.	192	
60115	15" CORR. METAL PIPE CULVERT	LIN. FT.	178	
60118	18" CORR. METAL PIPE CULVERT	LIN. FT.	110	
61324	24" CLASS III REIN. CONC. PIPE CULVERT	LIN. FT.	10	
63410	GROUTED LIGHT STONE REVETMENT	SQ. YD.	27.4	
67100	CONSTRUCTION SIGNS	LUMP SUM	1	
88000	RIGHT OF WAY MARKERS	EACH	27	
90120	TYPE 2 MULCH	ACRE	4.4	
90121	ASPHALT EMULSION	GALLON	660	
90400	SEEDING	ACRE	4.4	

CONTINGENT ITEMS

SPECIAL TYPE B ASPHALT CONCRETE	TON	2484
ASPHALTIC CONCRETE SAMPLES	EACH	66
PLACING OF STATE-OWNED PIPE (12")	LIN. FT.	20
PLACING OF STATE-OWNED PIPE (15")	LIN. FT.	30

BRIDGE AT STATION 647+96.5

DRAWING NO. G-564R

24100	REMOVAL OF BRIDGES	LUMP SUM	1
50034	CLASS 3 EXCAVATION FOR STRUCTURES	CU. YD.	753
53020	CLASS B CONCRETE	CU. YD.	347.5
54000	REINFORCING STEEL	POUND	32310

CONTINGENT ITEMS

CRUSHED STONE BACKFILL	TON	143.6
------------------------	-----	-------

BRIDGE AT STATION 125+39.9

DRAWING NO. G-565R1

50014	CLASS 1 EXCAVATION FOR STRUCTURES	CU. YD.	55.5
50024	CLASS 2 EXCAVATION FOR STRUCTURES	CU. YD.	13.5
53023	CLASS B CONCRETE	CU. YD.	30.4
53037	CLASS B1 CONCRETE	CU. YD.	102.2
54000	REINFORCING STEEL	POUND	17560
55001	FABRICATED STRUCTURAL CARBON STEEL	POUND	5900
99999	SPECIAL WORK	LUMP SUM	1

PROJECT ACCEPTED 10-27-63

Prepared By J.I. STELZER Date NOV 7 1963

Checked in Dist. Office By

Date

19

Checked in Central Office By J.T. Johnson Date 12-19-63

Revised By

Date

19

PLAN	DATE	BY
REVISION		
NOTE BOOK		
NO.		

E. 1/4 Cor. Sect. 21, T52N R33W
(Stone in Place)

635
4'x6'x12' Core
Culvert Sta. 25+10
Extended R/W 10' of 20' RCP

J. B. DILLINGHAM

FINAL PLANS

Sta. 662+25 - D&L F.E. LT.
Crowned

PI. 654+07.5
Δ 51°09' LT.
D 3°00'
T 914.1
L 1705.0
R 1910.08 (CA)
S.E. 0.07/Ft.

TYPICAL SECTION
Gr. Light Stone Ret. ment
Rt. Sta. 645+10
(Class B Cong.)

Sta. 648+10.0
2 (12'x12')
D&L Culvert
Bridge Dwg. No. G-564.R

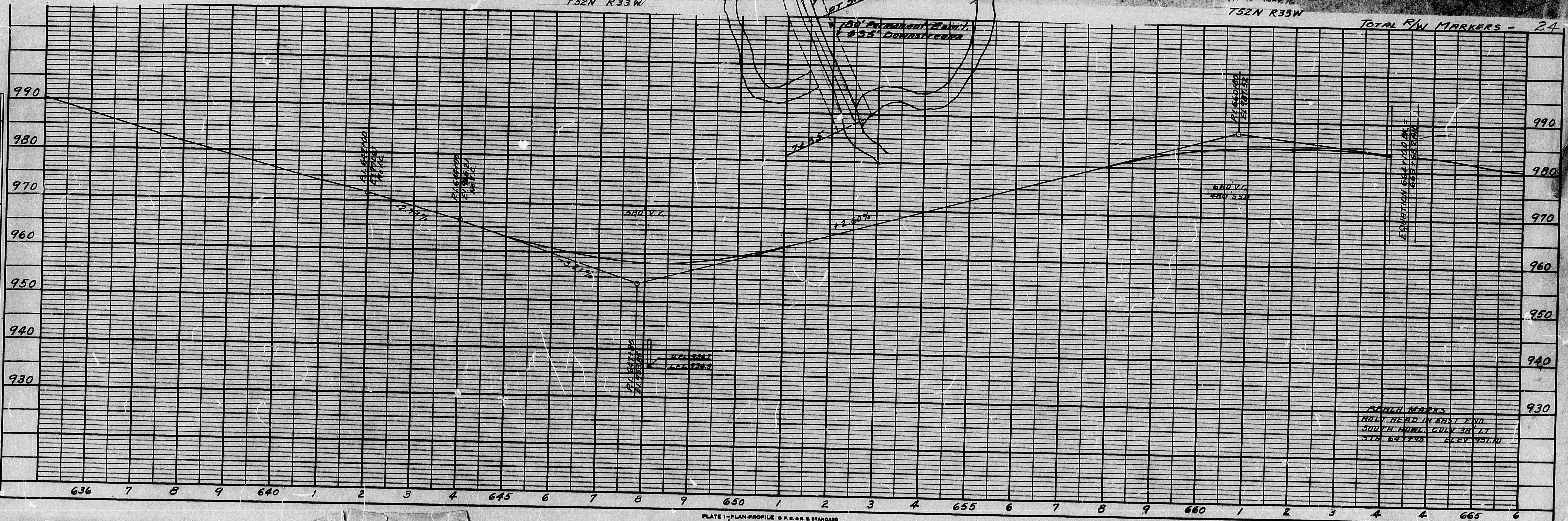
NE 1/4 Sec. 21
T52N R33W

SAMUEL BECKETT

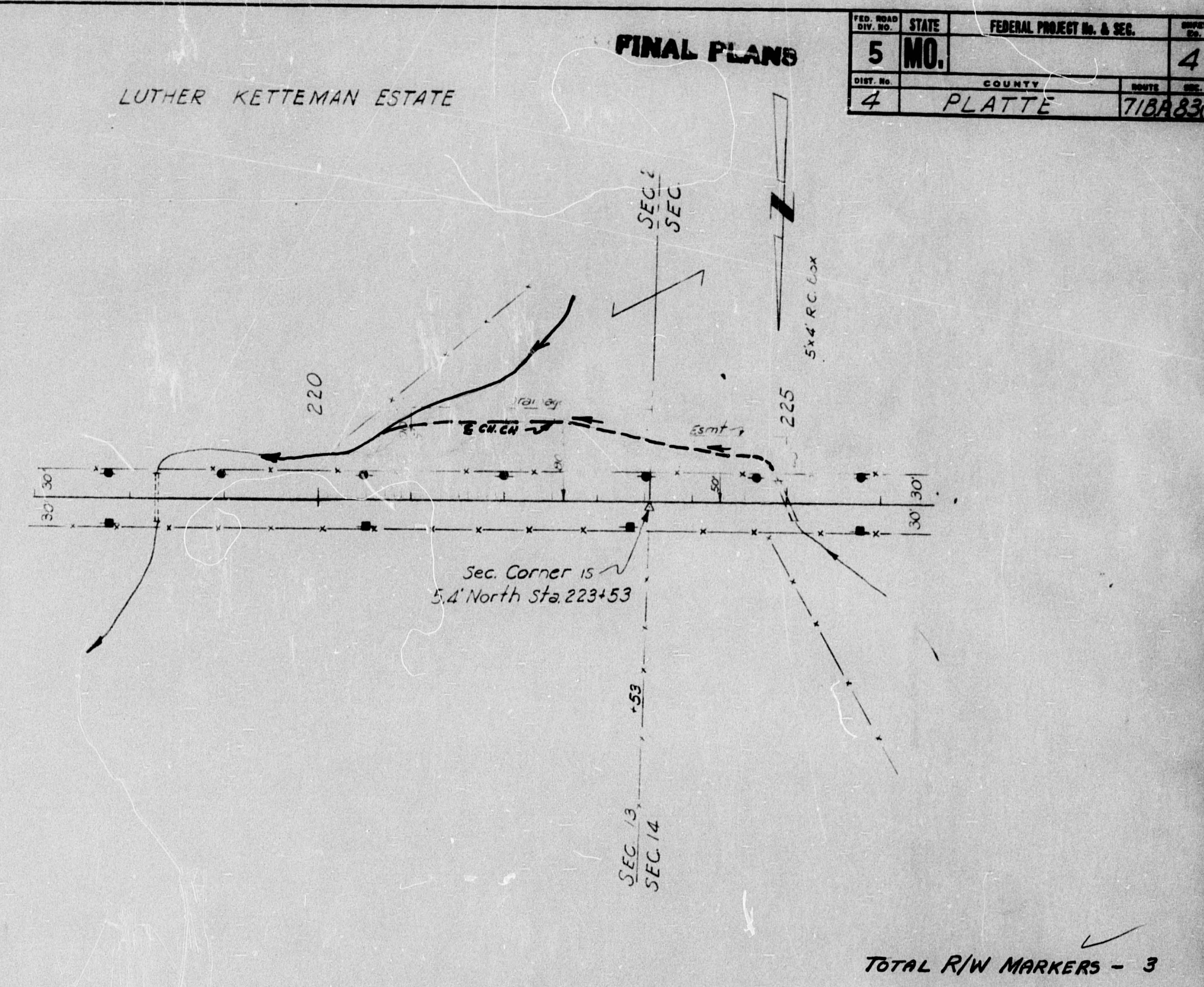
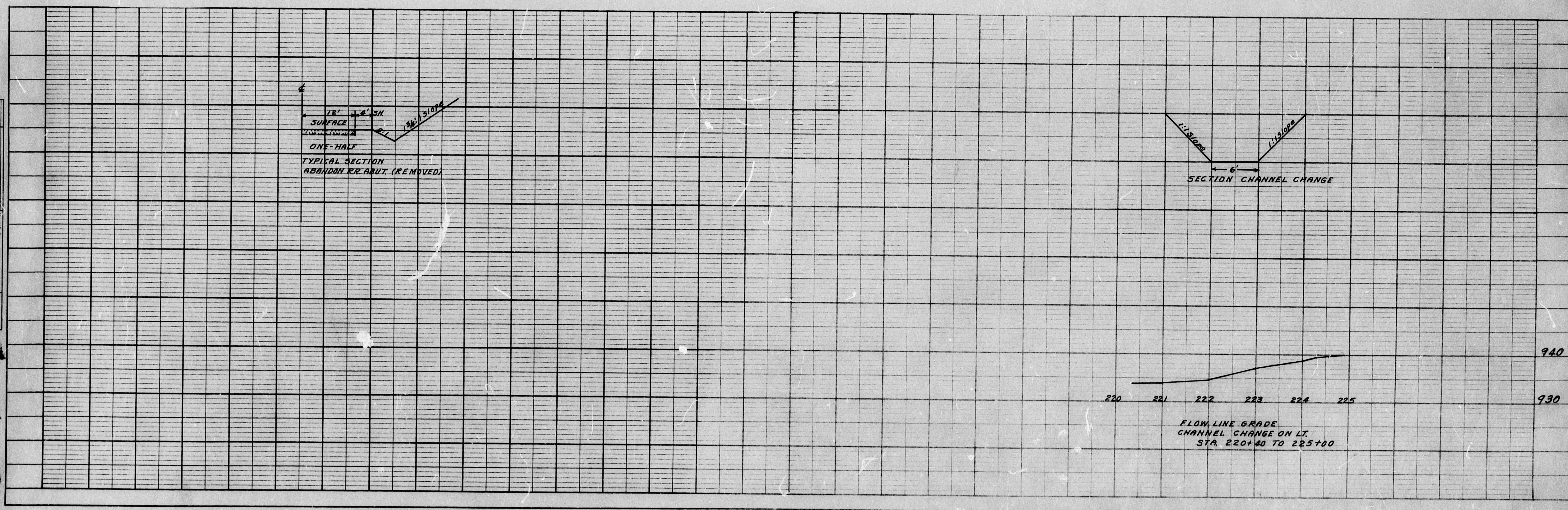
Sec. 21
Sec. 16

SE 1/4 Sec. 16
T52N R33W

TOTAL R/W MARKERS - 24



PROFILE	BY	DATE
PLOTTED		
GRADES CHECKED		
B. M.'S NOTED		
STRUCTURE NOTATIONS CH'NG.		



TOTAL R/W MARKERS - 3

FINAL PLANS

LUTHER KETTEMAN ESTATE

St2 201+50
F.E.Lt-18" x 26' CMA

9493
x9.0

FERRELVIEW

6

12' 18' 5H.

SURFACE

ONE-HALF

3% SLOPE

TYPICAL SECTION
ABANDON R.R. ABUT. (REMOVED)

SECTION CHANNEL CHANGE

FLOW LINE GRADE
CHANNEL CHANGE ON LT.
STA. 220+40 TO 225+00

LIST OF STANDARD PLANS

PROJ.	SHEET
SEC. 83 (1)	5
CO.	RTE.
PLATTE	71 BY PASS

[illegible]

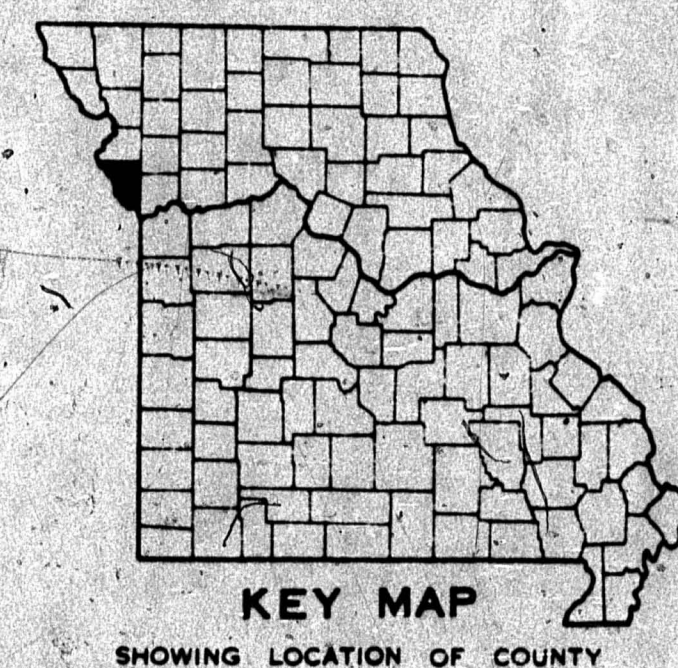
378

LIMITED ACCESS HIGHWAY

FINAL PLANS

COUNTY
PLATTE
STATE ROUTE NO.
71 BYPASS
PROJECT NO.
SEC. 83(1)

INDEX OF SHEETS	
TITLE SHEET	1
TYPICAL SECTIONS (1 Sheet)	2
SUMMARY (1 Sheet)	2-A
PLAN-PROFILE & B SHEETS	3-4
REFERENCE POINTS (on Plan Sheet #3)	
SPECIAL SHEETS	
LIGHTING	
SIGNALS	
SIGNING	
CULVERT SECTIONS	
BRIDGE PLANS	5-11
STANDARDS	7
CROSS SECTIONS	1-7



DESIGN DESIGNATION

A.D.T. (1961) = 1800
 A.D.T. (1981) = 3600
 D.H.V. (1981) = 360
 D=50 %
 T=12 %
 V=50 m.p.h. (Widen & Resurf.)
 60 m.p.h. (Relocation)

MISSOURI STATE HIGHWAY COMMISSION PLAN AND PROFILE OF PROPOSED STATE ROAD

FEDERAL AID PROJECT

PLATTE COUNTY



LEGEND

- Beginning and Ending of Limited Access
- Limited Access
- No Right of Access or Crossing of Lines bearing this symbol will be permitted under any circumstances.



CONVENTIONAL SYMBOLS

STATE LINE	---
COUNTY LINE	---
CITY LIMITS	---
TOWNSHIP OR RANGE LINE	---
OTHER LAND SURVEY LINES	---
FENCE LINE	---
GUARD RAIL	---
PROPERTY LINE	---
RIGHT OF WAY LINE	---
RIGHT OF WAY MARKER	---
RAILROAD	---
SURVEY CENTER LINE	---
CULVERT	---
OVERHEAD TELEPHONE NEW	---
OVERHEAD TELEPHONE EXIST.	---

EXISTING BUILDINGS & STRUCTURES	---
GROUND LINE	---
GRADE LINE	---
OVERHEAD POWER-EXIST.	---
OVERHEAD POWER-NEW	---
UNDERGROUND GAS-NEW	---
UNDERGROUND WATER-EXIST.	---

TITLE SHEET LEGEND

INTERCHANGE	---
GRADE SEPARATION	---
CONSTRUCTION IDENTIFICATION SIGNS	---

256+40 END R 71 B.P.S. 83(1)
 STA. 256+40
 RTE. 1, SEC. 39
 RTE. 71 BYPASS, SEC. 83(1)
 24' ASPH. CONC. WIDEN. & RESURF.
 Length 4.889 miles

627+25 BEGIN
 STA. 627+25
 SEC. 39
 SEC. 39

EQUATIONS:

664+10.0, Bk. = 663+68.2, Ahd
 675+88.8, Bk. = 47+33.6, Ahd

SUBMITTED BY DATE

CHIEF ENGINEER
 MISSOURI STATE HIGHWAY COMMISSION
 DEPARTMENT OF COMMERCE
 BUREAU OF PUBLIC ROADS

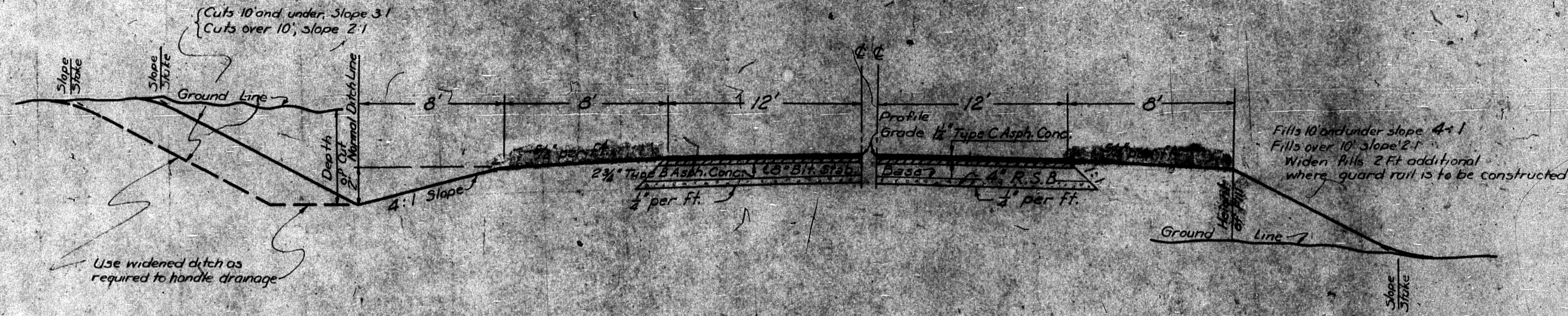
APPROVED:

DIVISION ENGINEER

DATE

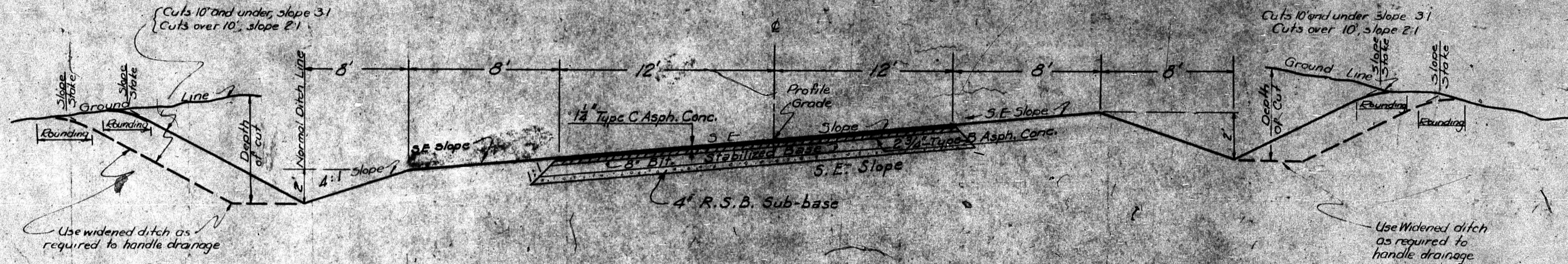


373



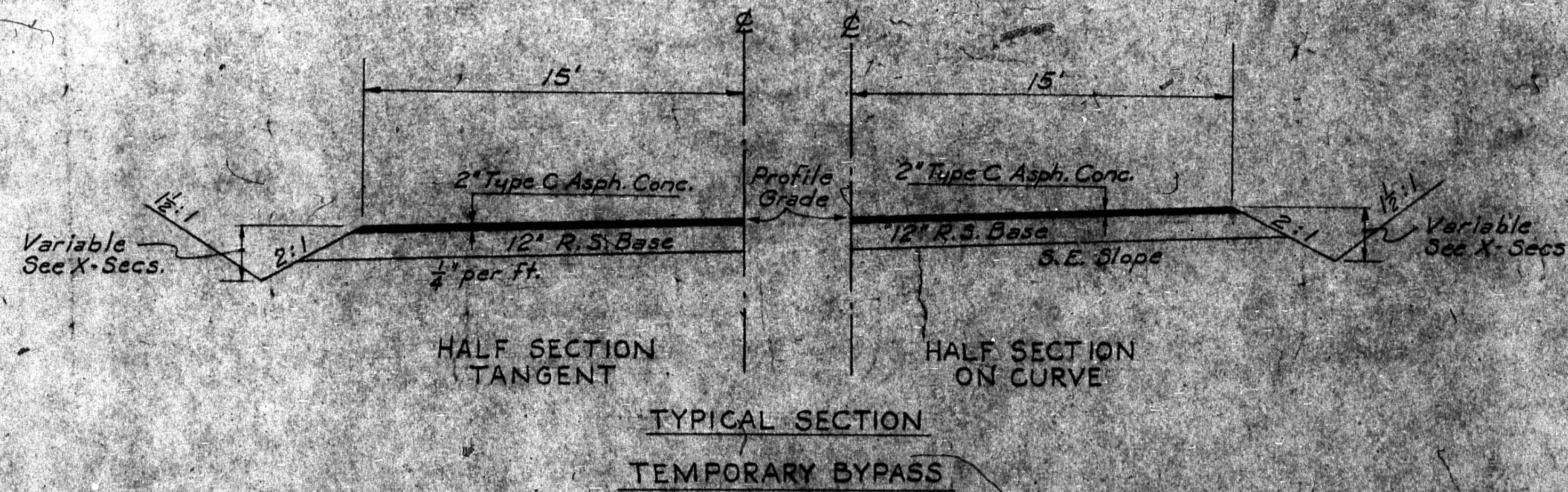
Note: Between Sta. 642 & Sta. 645+, the asph. conc. pavement is to be laid over the existing concrete. Base courses shall be used only as required for Pav't Widening.

SECTION ON TANGENT



CUT SECTION ON SUPERELEVATED CURVE (ALL CURVES OVER 30 MINUTES)

NOTE: Fill sections on superelevated curve to be identical to this section from shoulder to shoulder. Beyond shoulders use same as shown for 'Section on Tangent'.



HALF SECTION TANGENT

HALF SECTION ON CURVE

TYPICAL SECTION TEMPORARY BYPASS

GENERAL NOTES:

For details of super-elevation & widening of horizontal curves, undergrading, rounding, all pav't appurtenances, drainage items, etc., see other dwgs & Std. Dwg. 2140.

In transitioning from one cut or fill slope to another, use a 25' transition beginning at a point 25' back along that which would normally be the flatter slope and ending the transition at the actual point where the steeper slope is required. If the actual limits requiring a steeper slope is less than 25' in length, do not change to the steeper slope.

All information shown on these Typical Sections is for the purpose of indicating general design and construction details. Actual construction of roadway widths, slopes, depths and type of ditches, undergraded cuts, and other features, shall conform to the details shown on Cross Sections and Plan-Profile sheets or as directed by the Engineer.

MISSOURI STATE HIGHWAY COMMISSION
PRIMARY SYSTEM
TYPICAL SECTIONS
FOR
40' GRADED EARTH
AND
24 FT. ASPH. CONC. PAV'T.

(DESIGN SPEED 60 M.P.H.)
ROUTE 71 BYPASS COUNTY PLATTE
PROJ OR SEC. 83(1)

APPROVED *A.C. Lewis*
ENGR. SURVEYS & PLANS

APPROVED *J.J. Casbolt*
CHIEF ENGINEER

LOCATION CLAY COUNTY LINE WEST TO INTERSTATE ROUTE I-29

MISSOURI STATE HIGHWAY COMMISSION

TYPE GRADED FARTH, BRIDGES, 24' A.C. PAVT. ON PART & 24' A.C. WIDEN/RESURF. ON PART

SUMMARY OF QUANTITIES

FED. ROAD DIST. No.	STATE	PROJECT	FISCAL YEAR	SHEET No.	TOTAL SHEETS
5	MO			2A	
DIST. No.	COUNTY	ROUTE	SEC. No.		
4	PLATTE	71-BP	63(1)		

EXCAVATION

STATION	CL. REVC.	CHCH. R	OLD ROAD TEMP. B.P.	COMB. TEMP. B.P.	TEMP. B.P.	CAMP CUT	M.S. CL. 1	SHRIMPING	REMARKS
627125									
642100								0.28	
664100	17976	6210	531	2171	18251	1464	3507		CL. 3 - 5% SAV. No. 2
664100								4.19	
256140									
192125									
183175	928								
220140									
225100		1033							See Sheet No. 6
NR. TOTALS	18904	7843	531	2171	18251	1464	3507	4.47	
CHCH. R	7243								
OLD ROAD	531								
TEMP. B.P.	2171								
ENTRS.								0.7	
TOTALS	28849				19715		3507	5.07	4.47

MISCELLANEOUS ITEMS

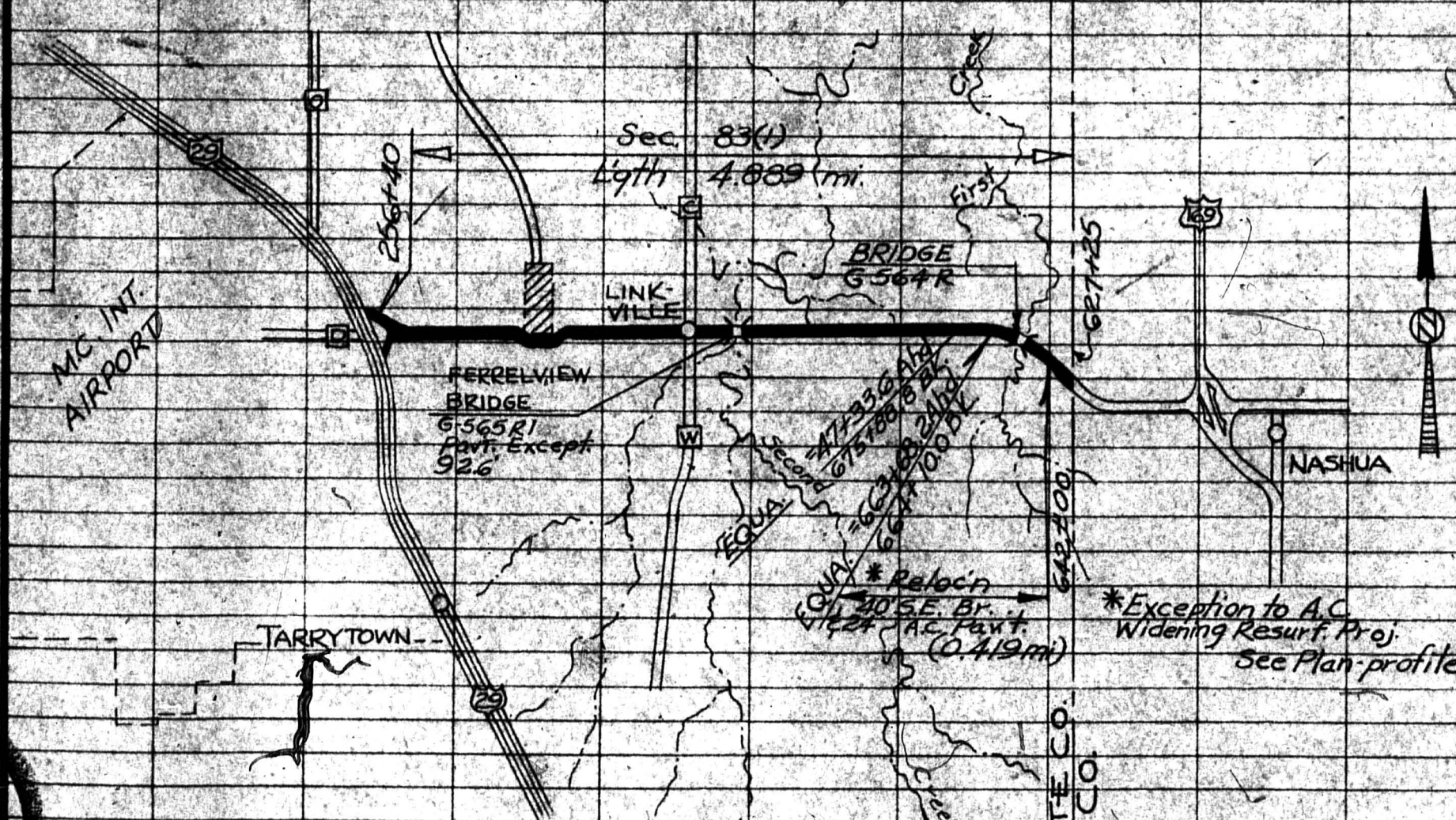
SHEET NO.	R/W MARKERS (EACH)	TYPE 2 MULCH (SQ. FT.)	SEEDING (SQ. FT.)
3	24	191270	191270
4	3		
TOTALS	27	191270	191270
USE	27	4.4 Acres	4.4 Acres

RIGID PAVEMENT REMOVAL

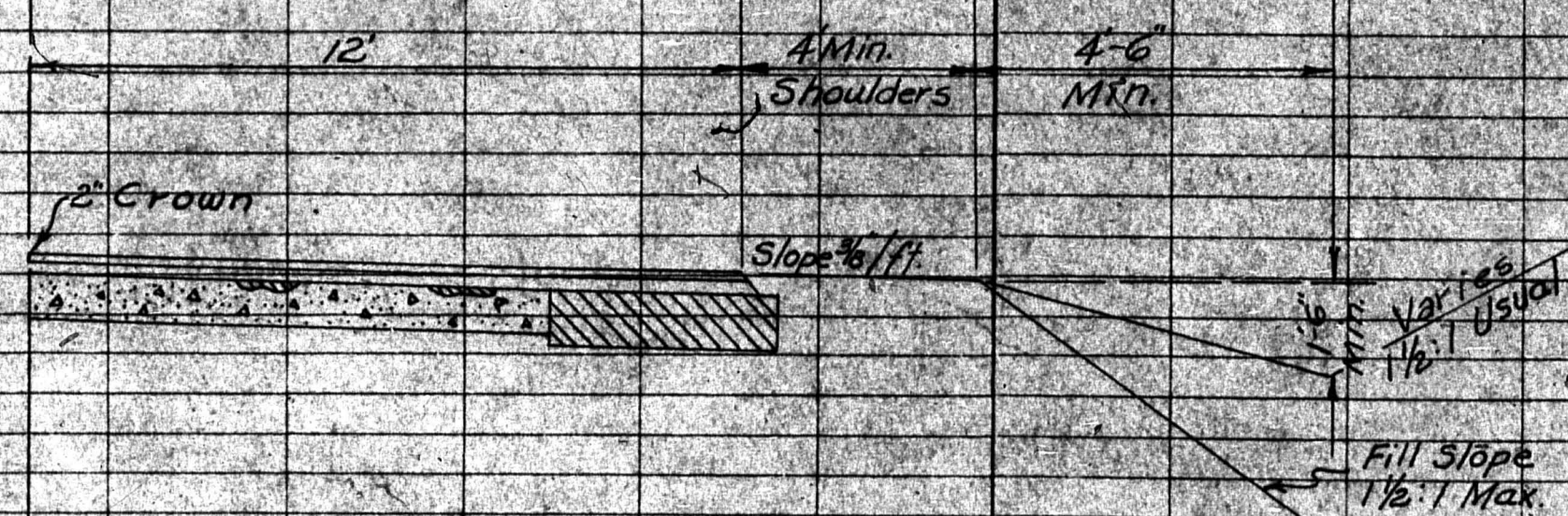
STATION TO	STATION	LENGTH	WIDTH	SQ. YDS.	REMARKS
644126	664110	1841.0'	18.0'	3682	Surface Measured
TOTAL				3682	

GROUTED LIGHT STONE REVETMENT

STATION LOCATION	WIDTH	LENGTH	SQ. YDS.	REMARKS
645110 RT. Slope	44'	56'	27.4	See Sheet No. 2
TOTAL			27.4	



LOCATION SKETCH



TYPICAL HALF SECTION

LENGTH OF PROJECT

End of Project	Station	256140
Beginning of Project	Station	627125
Apparent Length		193715
Equations and Exceptions:		
STAGE 1 (ROAD) = 6631682 AND		(+ 418)
TR 664100 = 471336 AND		(+ 28552)
Total Corrections		1628920
Net Length of Project		258120
State Length		4889
Federal Length		

BOX CULVERTS

STATION	LOCATION	STD. SIZE	SKEN	1/8TH CL. B CONC.	REINF.	CL. 3 EXC.	W.M. SLOPE	REMARKS
81176	E	53.30	2.11	6.11	1.8	250	2.1	EXTRA L.A.
114166	E	53.30	2.11	6.11	1.4	200	2.1	EXTRA L.A.
237180	E	53.30	2.11	6.11	4.4	600	2.1	EXTRA L.A.
TOTALS						7.6	1050	4

CROSSROAD PIPE CULVERTS

STATION	15' CMP	24' RCP	HDMLL	CONC.	STEEL	EXC.	SKEN	REMARKS
636120		10	53.40R	1.1	100	0	25	EXTRA L.A. to 4.6 Box
636120				0.4	20	1		EXTRA L.A. to 4.6 Box
663150	42					7	RT. 12	TEMP. BY-PASS
TOTALS	42	10				1.5	120	8

ENTRANCES (CMP)

STATION	LOCATION	12"	15"	18"	24"	M.S. CL. 1	REMARKS
662125	EE LT.					0.4	DALENTY - CROWN
663150	PE RT.	28				0.3	
77180	PE LT.		28				
25175	PE RT.	30					
87160	PE RT.	28					
91110	PE RT.				30		
91120	PE LT.		26				
117130	PE LT.			28			
136100	PE RT.			28			
137110	PE LT.				28		
162100	PE RT.	28					
162135	PE RT.	26					
162135	PE LT.			20			
174160	PE LT.		28				
201150	PE LT.			26			
210100	PE LT.	52					D&L Entry
235170	PE LT.		26				
TOTALS		192	136	110	20	30	0.7

FINAL PLANS GENERAL SUMMARY

ITEM NO.	DESCRIPTION	UNIT	TOTAL UNITS	NO. UNITS
21004	CLASS A EXCAVATION	CU. YD.	28849	
21204	COMPACTING EMBANKMENT	CU. YD.	19715	
21214	COMPACTING IN CUT	CU. YD.	3507	
21507	WATER	100 GAL.	100	
21801A	MACHINE GRADING, CLASS 1	STATION	0.7	
23302	SHRIMPING SHOULDERS	MI.	4.47	
24200	REMOVAL OF (A) MISCELLANEOUS ITEMS	LUMP SUM	1	
24203	REMOVAL OF RIGID PAVEMENT	SQ. YD.	3682	
31015	TYPE 1 AGGREGATE FOR BASE	TON	2897	
31142	PROCESSING TYPE 1 AGGREGATE (6")	MI.	0.42	
31102	PROCESSING TYPE 1 AGGREGATE (12")	MI.	0.16	
33045	CRUSHED STONE (B) (SURFACE)	TON	285	
37015	SANDING PRIMER	TON	37	
37207	PRIMER (RC-0)	GALLON	5250	
41205	MINERAL AGGREGATE (BASE)	TON	0	
41257	BITUMINOUS MATERIAL (BASE) (60-100 P.P.)	GALLON	0	
43025	TYPE B ASPHALTIC CONCRETE	TON	9591	
43025	TYPE B ASPH. CONC. (BASE WIDENING)	TON	10873	
43035	TYPE C ASPHALTIC CONCRETE	TON	5259	
43055	WEDGE COURSE	TON	4146	
50034	CLASS 3 EXCAVATION FOR STRUCTURES	CU. YD.	12	
53022	CLASS B CONCRETE (MISCELLANEOUS)	CU. YD.	91	
54000	REINFORCING STEEL	POUND	1170	
60112	12" CORR. METAL PIPE CULVERT	LIN. FT.	132	
60115	15" CORR. METAL PIPE CULVERT	LIN. FT.	178	
60118	18" CORR. METAL PIPE CULVERT	LIN. FT.	110	
61324	24" CLASS III REINF. CONC. PIPE CULVERT	LIN. FT.	10	
83410	GROUTED LIGHT STONE REVETMENT	SQ. YD.	27.4	
87100	CONSTRUCTION SIGNS	LUMP SUM	1	
88000	RIGHT OF WAY MARKERS	EACH	27	
90120	TYPE 2 MULCH	ACRE	4.4	
90121	ASPHALT EMULSION	GALLON	660	
90400	SEEDING	ACRE	4.4	
	CONTINGENT ITEMS			
	SPECIAL TYPE B ASPHALT CONCRETE	TON	2484	
	ASPHALTIC CONCRETE SAMPLES	EACH	66	
	PLACING OF STATE-OWNED PIPE (12")	LIN. FT.	20	
	PLACING OF STATE-OWNED PIPE (15")	LIN. FT.	30	
	BRIDGE AT STATION 647196.5			
	DRAWING NO. G-564R			
84100	REMOVAL OF BRIDGES	LUMP SUM	1	
50034	CLASS 3 EXCAVATION FOR STRUCTURES	CU. YD.	753	
53020	CLASS B CONCRETE	CU. YD.	3475	
54000	REINFORCING STEEL	POUND	32310	
	CONTINGENT ITEMS			
	CRUSHED STONE BACKFILL	TON	143.6	
	BRIDGE AT STATION 125139.9			
	DRAWING NO. G-565R1			
50014	CLASS 1 EXCAVATION FOR STRUCTURES	CU. YD.	55.5	
50024	CLASS 2 EXCAVATION FOR STRUCTURES	CU. YD.	13.5	
53023	CLASS B CONCRETE	CU. YD.	30.4	
53037	CLASS B1 CONCRETE	CU. YD.	102.2	
54000	REINFORCING STEEL	POUND	17560	
55001	FABRICATED STRUCTURAL CARBON STEEL	POUND	5900	
99999	SPECIAL WORK	LUMP SUM	1	

PROJECT ACCEPTED 10-22-63

Prepared By J.L. STELZER Date NOV. 7 1963

Checked in Dist. Office By

Date

19

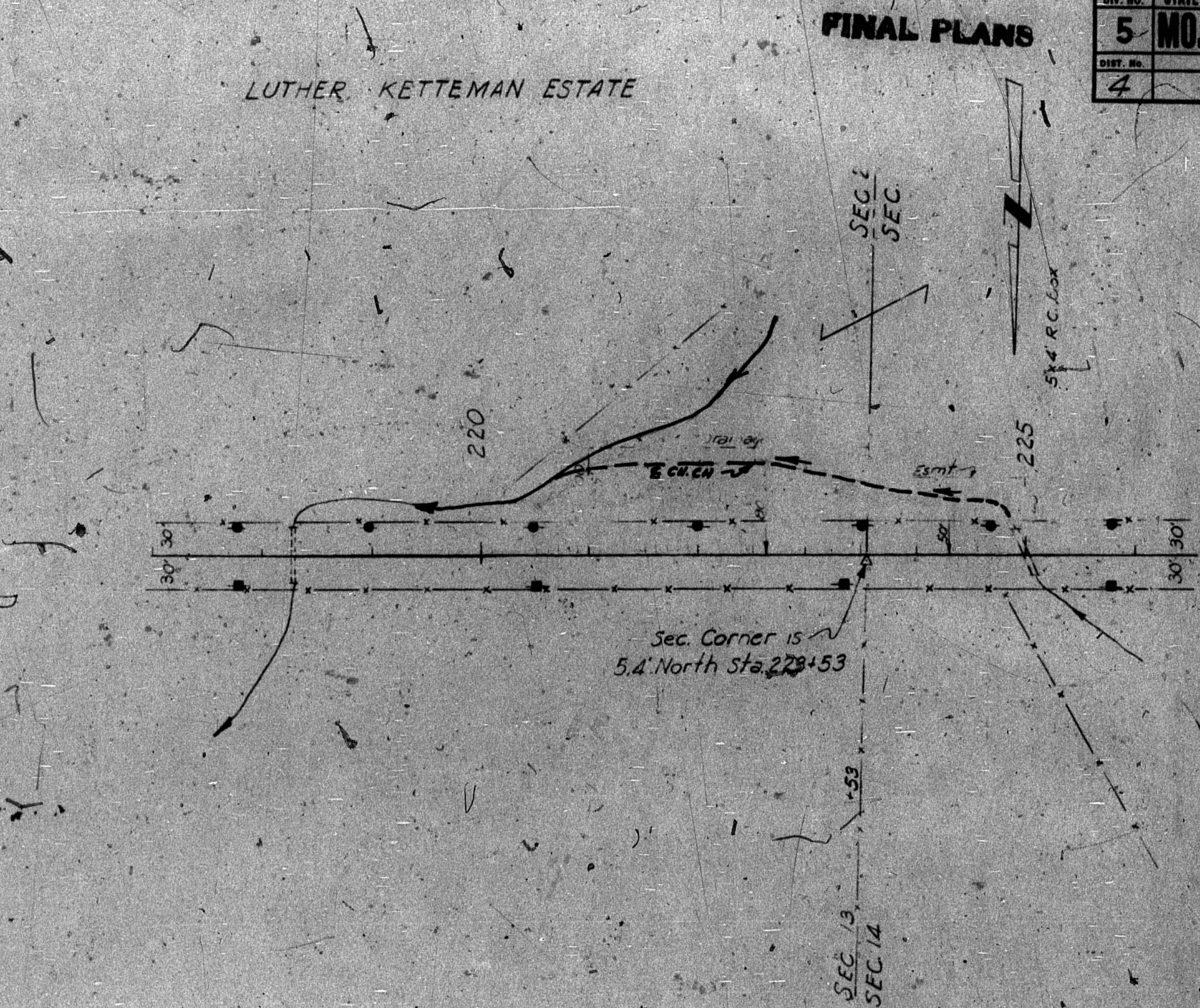
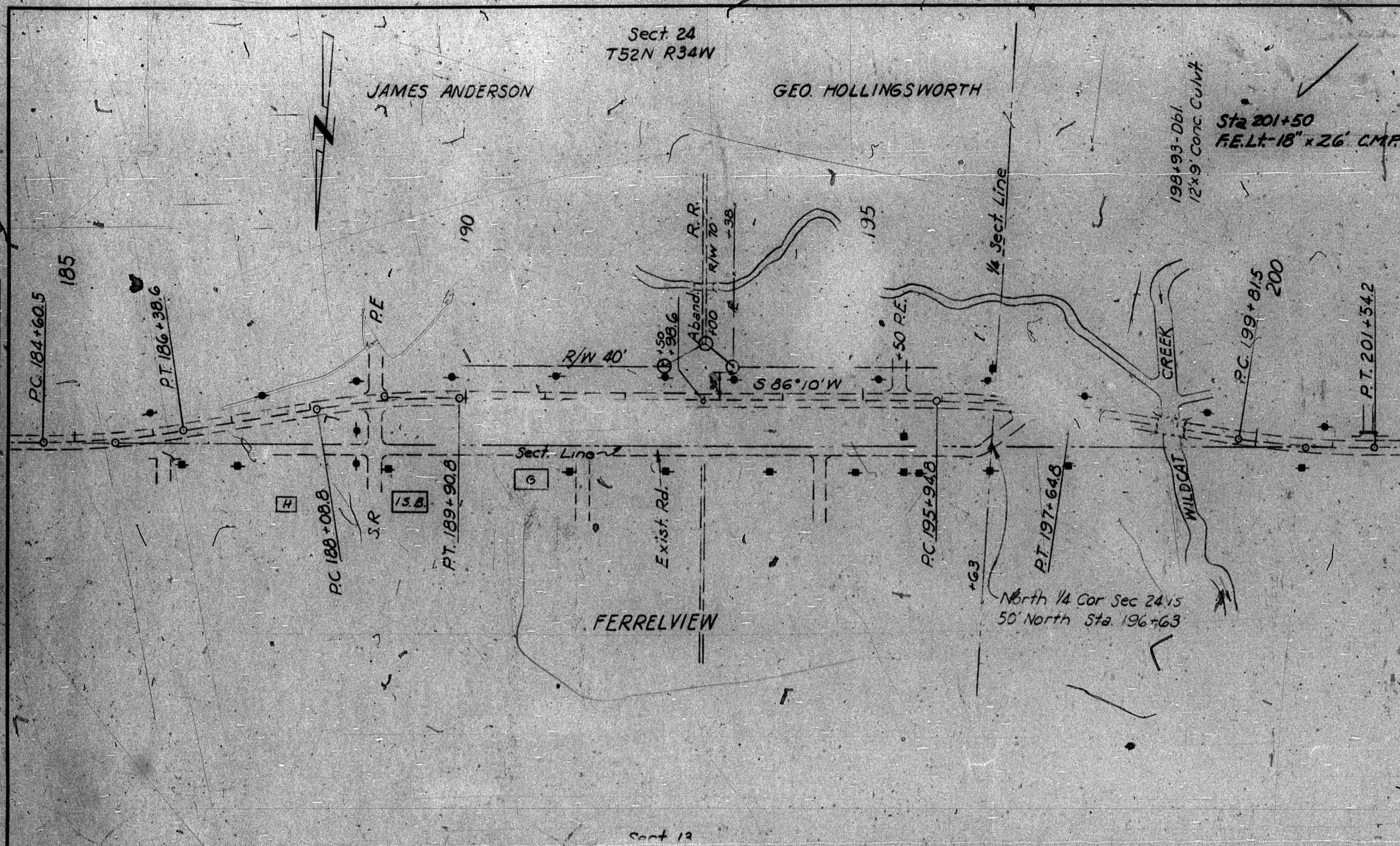
Checked in Central Office By J.T. Johnson Date 12-19-63

Revised By

Date

19

PLAN	DATE
BY	
PROJECT	
DESIGNED	
CHECKED	
DATE	

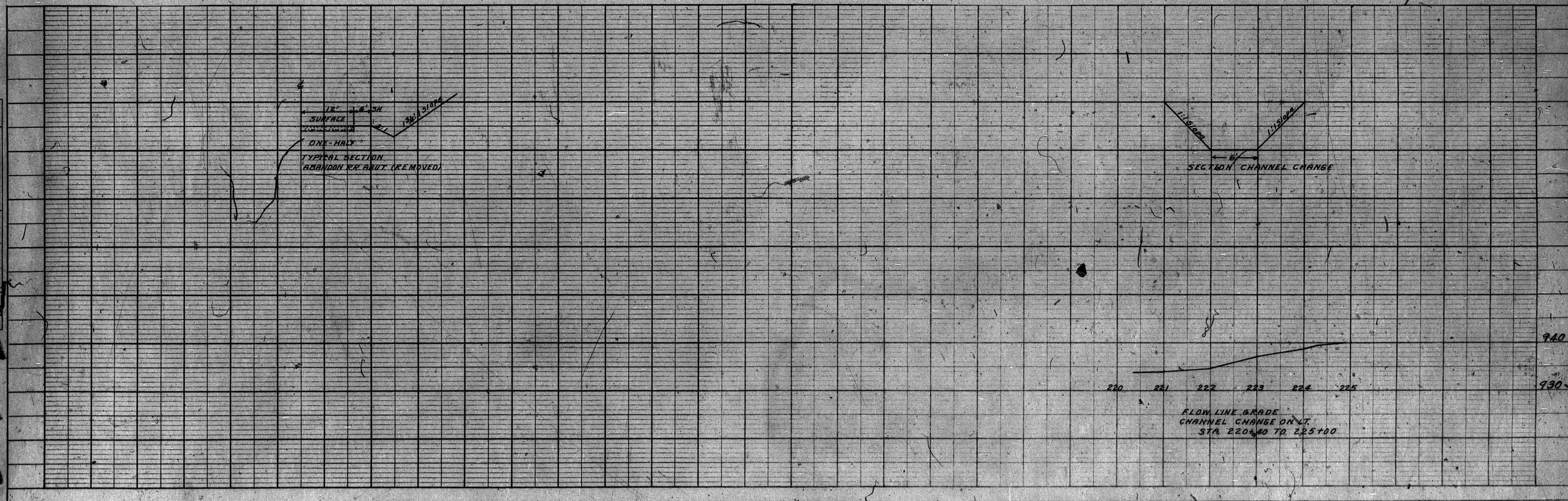


FED. ROAD DIST. NO.	STATE	FEDERAL PROJECT NO. & SEC.	SHEET NO.
4	MO.	718A330	4
COUNTY		ROUTE	
PLATTE		718A330	

FINAL PLANS

TOTAL R/W MARKERS - 3

PROFILE	DATE
BY	
PROJECT	
DESIGNED	
CHECKED	
DATE	



LIST OF STANDARD PLANS

PROJ.	SHEET
SEC. 83(1)	S
CO.	RTE.
PLATTE	7184 PASS

[illegible]

378